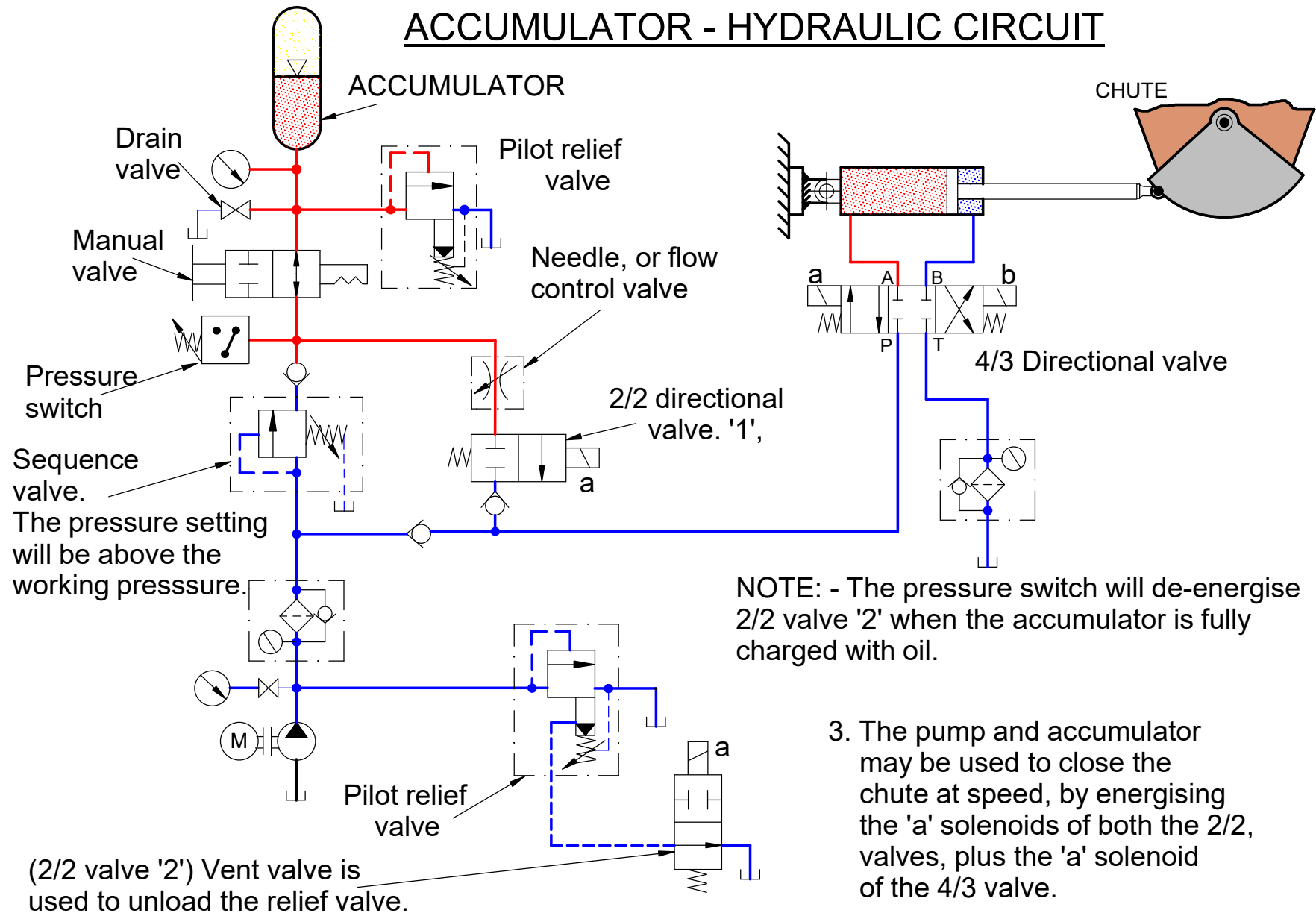


# ACCUMULATOR - HYDRAULIC CIRCUIT



1. The pump is used to extend and retract the cylinder, to open and close the chute, by energising the 'a' solenoids of the 2/2 vent valve '2', and the 'a' or 'b' solenoid of the 4/3 valve.

2. Should the pump fail, the fluid stored in the accumulator under pressure, will be used close the chute, by energising the 'a' solenoid of 2/2 valve '1', and the 'a' solenoid of the 4/3 valve.

3. The pump and accumulator may be used to close the chute at speed, by energising the 'a' solenoids of both the 2/2 valves, plus the 'a' solenoid of the 4/3 valve.