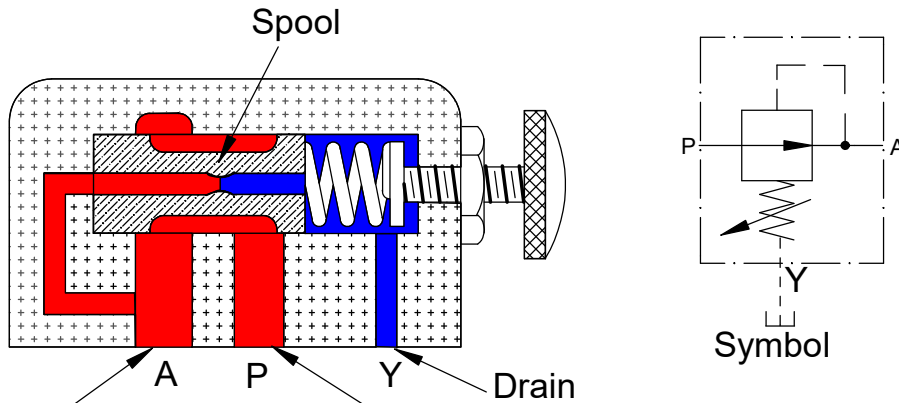


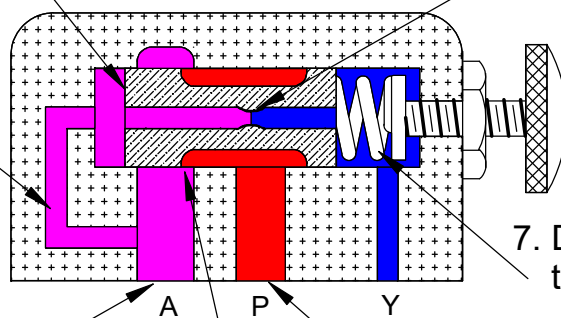
Direct Acting Pressure Reducing Valve.



2. And out of port 'A' to the hydraulic cylinder. As there is no resistance to the flow rate the pressure reducing valve remains fully open.
1. Hydraulic fluid passes from port 'P'.....

4. Spool face, forcing the spool to the right, tending to close the fluid supply to port 'A'...
5. But the orifice in the spool allows a continuous fluid flow to port 'A' maintaining the pressure differential.....

3. Pressure is sensed via the pilot line and acts on the.....



2. And a pressure rise in port 'A', as the cylinder meets a resistance to the load.....

1. As the hydraulic cylinder meets a resistance, there is a pressure rise in port 'P'....

6. Across the opening....