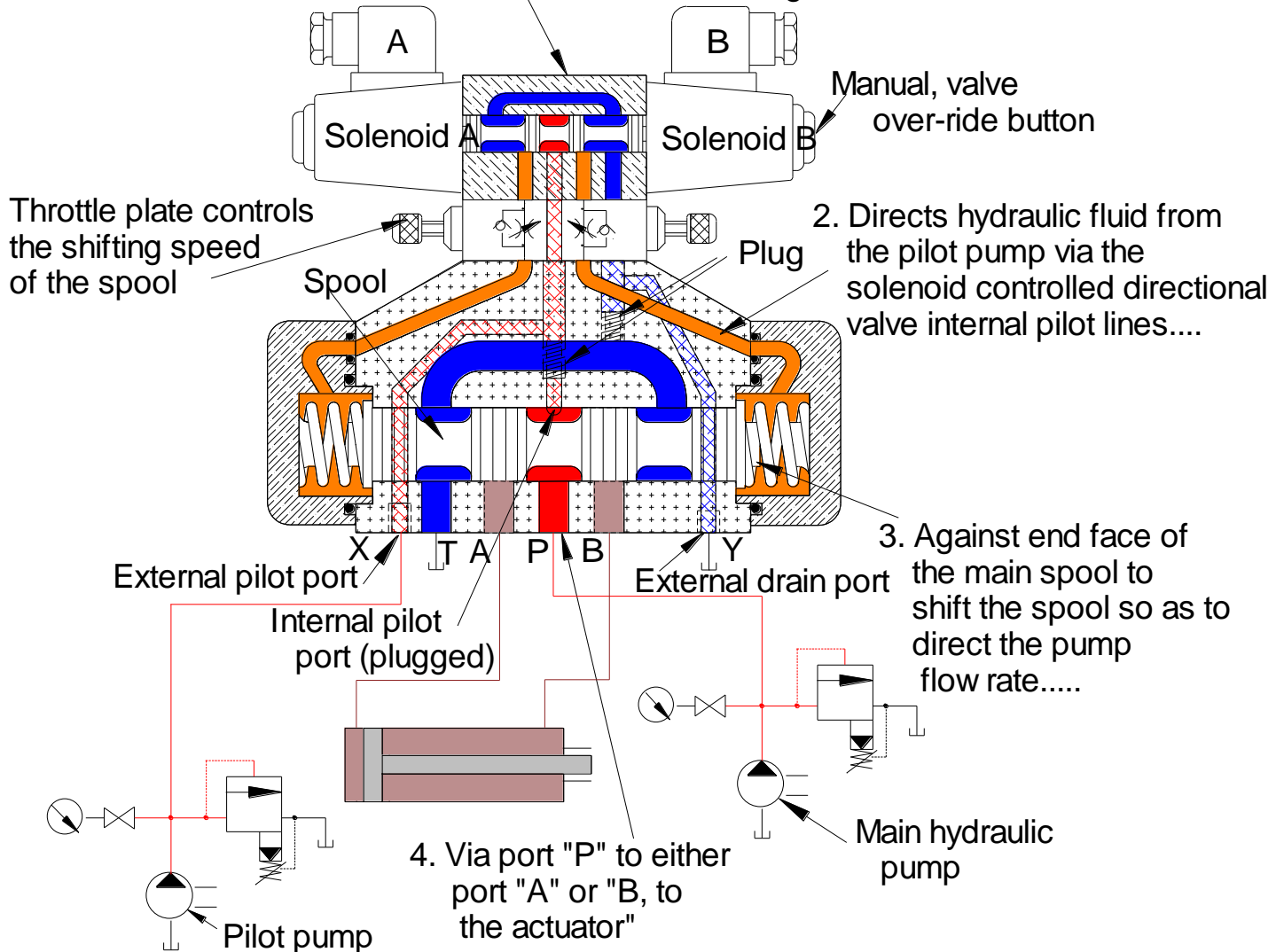


Solenoid controlled pilot operated directional valve  
externally piloted externally drained

1. The solenoid valve when energised .....



**SOLENOID CONTROLLED PILOT-OPERATED DIRECTIONAL VALVE – EXTERNALLY PILOTED**

The Equivalent of:  
 NG 16 = CETOP 7. 300 l/min  
 NG 25 = CETOP 8. 700 l/min  
 NG 32 = CETOP 10. 1100 l/min