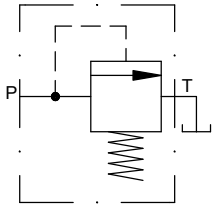
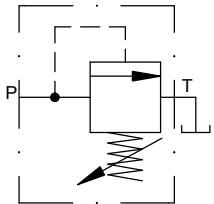


PRESSURE CONTROL VALVES

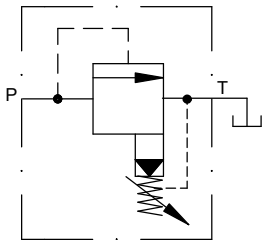
PRESSURE CONTROL VALVES ARE INFINITELY VARIABLE BETWEEN THEIR OPEN AND CLOSED POSITIONS.



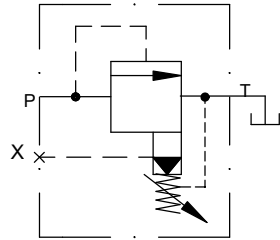
RELIEF VALVE DIRECTING ACTING, NON ADJUSTABLE



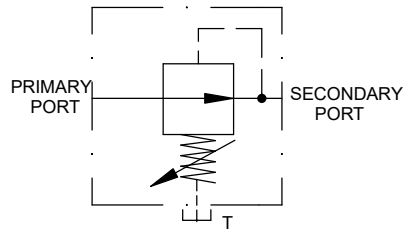
RELIEF VALVE DIRECTING ACTING, ADJUSTABLE



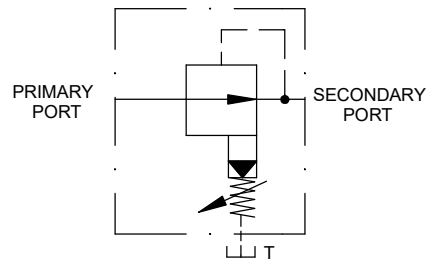
PILOT OPERATED PRESSURE RELIEF VALVE, ADJUSTABLE



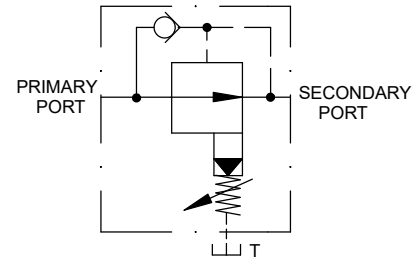
PILOT OPERATED PRESSURE RELIEF VALVE, ADJUSTABLE.  
P = INLET.  
T = TANK.  
X = PILOT LINE FOR VENTING OR REMOTE PRESSURE CONTROL.



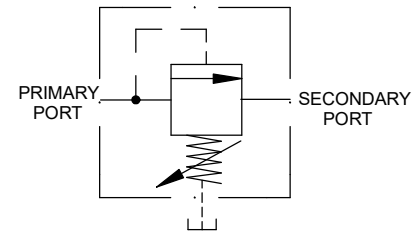
PRESSURE REDUCING VALVE, DIRECT ACTING.



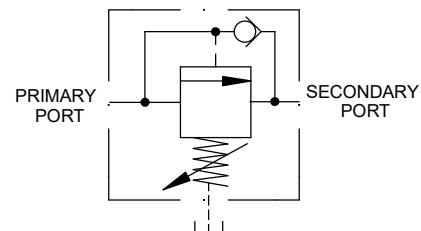
PILOT OPERATED PRESSURE REDUCING VALVE.



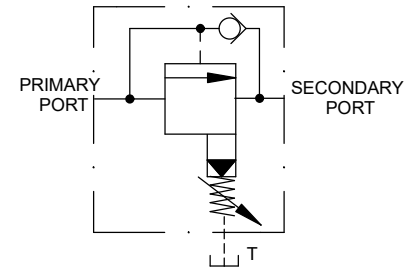
PILOT OPERATED PRESSURE REDUCING VALVE, WITH FREE RETURN FLOW.



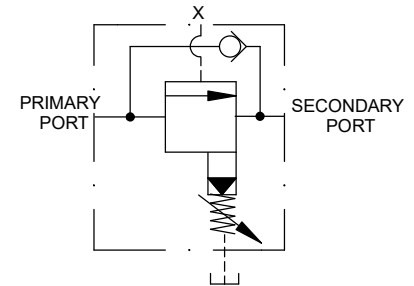
SEQUENCE VALVE, DIRECT ACTING.



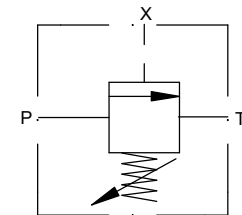
SEQUENCE VALVE, DIRECT ACTING, WITH FREE RETURN FLOW.



PILOT OPERATED SEQUENCE VALVE, WITH FREE RETURN FLOW.



PILOT OPERATED SEQUENCE VALVE, WITH REMOTE PILOT SIGNAL PORT (X), AND FREE RETURN FLOW.



UNLOADING VALVE  
PORT X = SIGNAL PORT

Copyright: GarnettCross.com

**SYMBOLS. 3.**